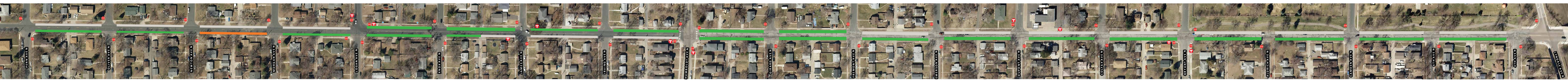


53rd Ave N Bikeway Parking Study

Penn Ave N to the Mississippi River | Existing parking study counts



Updated December 21, 2021

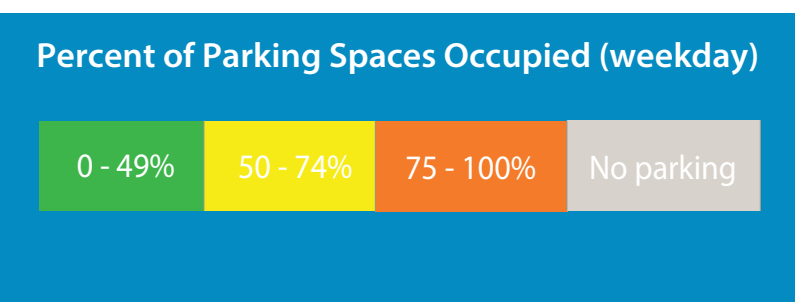
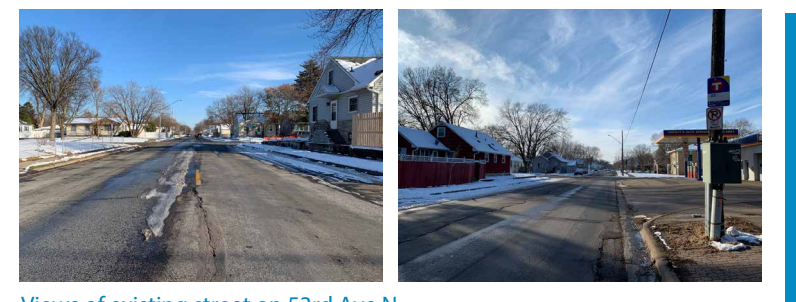


Parking Study

In anticipation of the 2022 resurfacing and bikeway project implementation, Public Works conducted a parking study of 53rd Avenue N. An inventory of existing on-street and off-street parking spaces was recorded and observed for current parking usage. The study boundaries included 53rd Avenue N between Penn Avenue N and the Mississippi River. Staff conducted the parking counts in late April and early May of 2021.

Legend

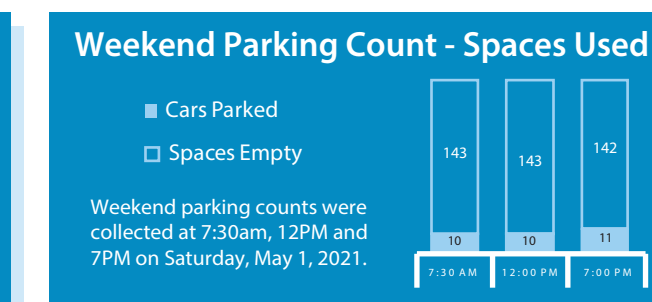
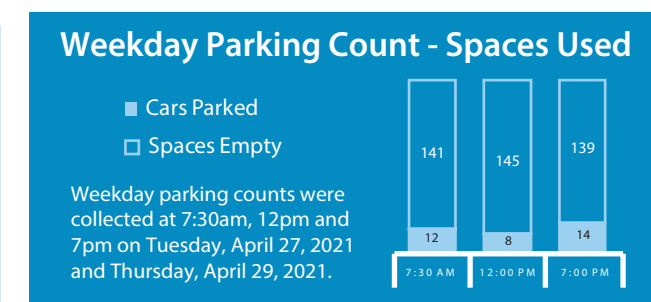
- Stop sign
- Transit stop



How do we count?

One on-street parking spot = 20 feet

No parking within 20 feet of intersections, or within 30 feet of stop sign or traffic controlled intersection



Results

Parking usage on 53rd Avenue N was low on most blocks of the street, ranging from 0-6 vehicles parked on one block. The block between Morgan Avenue N and Newton Avenue N had a slightly higher average number of spaces occupied with 80% of the available spaces occupied.

On average, 8% of available spaces on 53rd Avenue N were observed to be in use.