

# Online Survey

SAFE ROUTES TO SCHOOL  
PROJECT SURVEY  
NOVEMBER 22, 2001 -  
DECEMBER 13, 2001

**65%**  
Of online survey participants reported that they **DO NOT** live in the McKinley Neighborhood. 64% reported traveling the route on a weekly basis

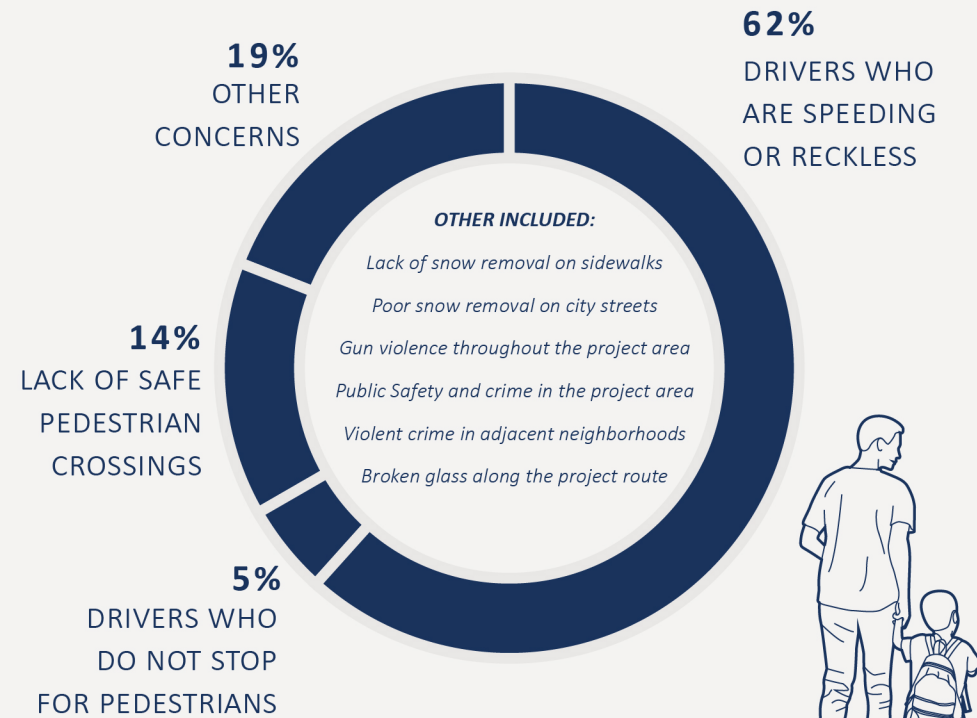
**3**

Online survey participants recorded that they were the parent or guardian of a child who attended Cityview school. This represents only 15% of the total surveyed

AMONG SURVEY PARTICIPANTS

## EXCESSIVE SPEEDING

WAS THE NUMBER ONE CONCERN



**3**

Weeks the online survey was available. The survey was advertised via mailed postcards, fliers sent home to parents, Cityview email blasts, and via church leadership. Paper copies were available at Cityview school but none were filled out.

## 4th St N & 34th Ave N

Ranked the **number one priority** intersection for traffic calming treatments along the project route

Followed by 4th St N and 33rd Ave N as the **number two priority** intersection for traffic calming treatments along the project route

**9/21**

ONLINE SURVEY PARTICIPANTS RANKED TRAFFIC CIRCLES AS THEIR LAST CHOICE OF TREATMENT ALONG THE PROJECT ROUTE

## WHAT WOULD MAKE THIS PROJECT A SUCCESS?

1. Slower traffic in the school area when school is in session
2. School buses available for short walks to Cityview
3. Slower speed limits, especially on 4th St N
4. Multiple safe modes of transit to school
5. No disruption to on-street parking
6. Highly visible traffic controls
7. Additional crossing guards
8. Increased adult presence
9. Police presence

