

# Project Background

The City and school community members have identified why this project is important. The following plans, policies, and projects all support increasing the safety and comfort of people walking or biking around Green Central.

**Green Central SRTS Plan (2021)**

This plan identifies infrastructure that supports safe and comfortable active transportation, with East 34th Street and 10th Avenue South noted as important corridors.

**SRTS Walking Routes for Youth Map (2014)**

This map lays out comfortable walking routes for students and identifies East 34th Street and 11th Avenue South as important connections to Green Central.

**Minneapolis Transportation Action Plan (2020)**

This plan outlines an All Ages and Abilities (AAA) Network. East 34th Street and 10th Avenue South are both identified as low-stress bikeways.

**Southside Greenway (2015)**

The Southside Greenway will create a safe and inviting route for people walking and biking through South Minneapolis, with a potential route down 10th Avenue South.

**Vision Zero Action Plan (2018)**

The plan outlines a goal of eliminating traffic deaths and severe injuries on City streets by 2027.

**Phillips Traffic Safety Improvements (Ongoing)**

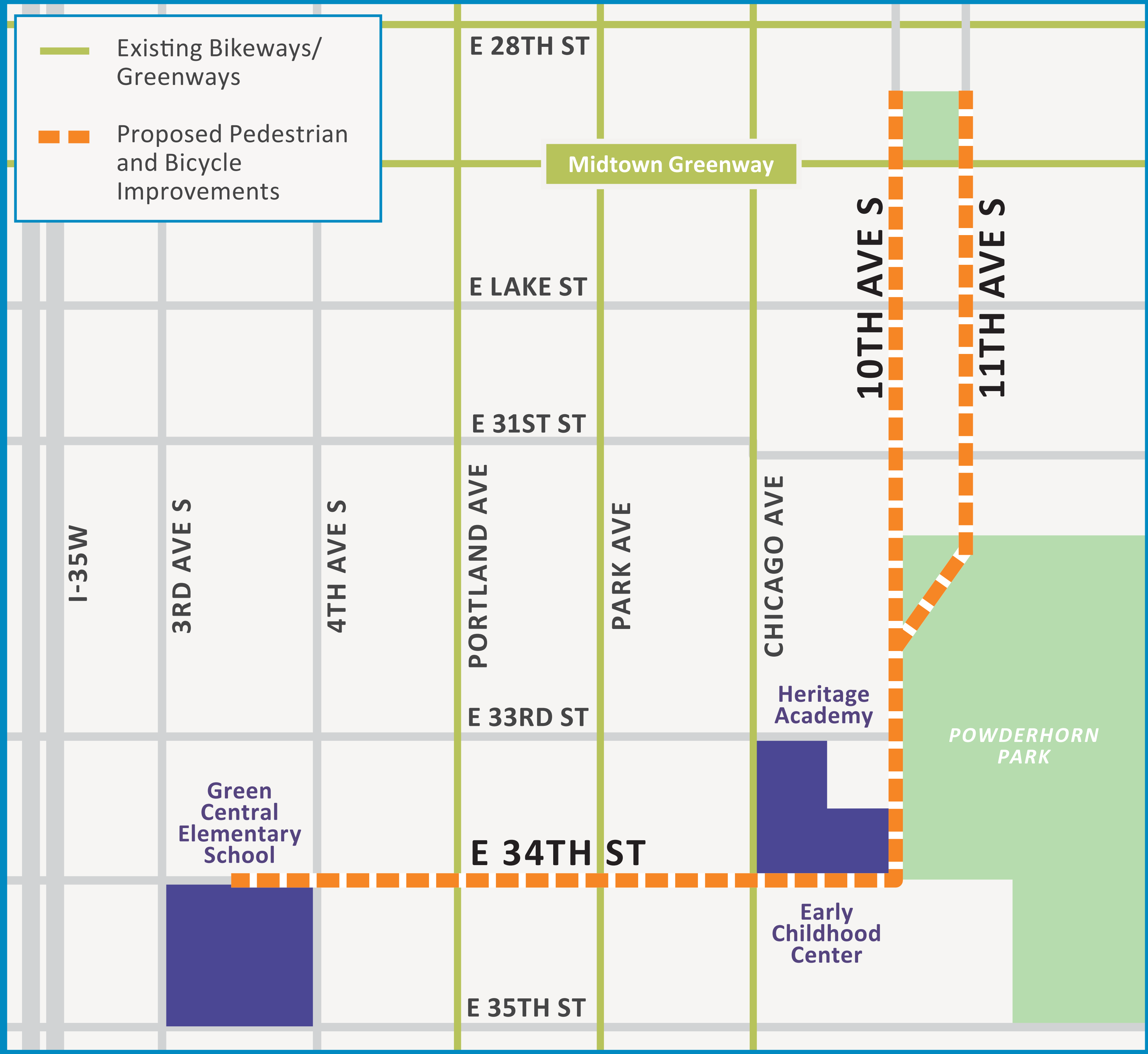
Improvements to access will complement new pedestrian safety enhancements in the Phillips neighborhood.

## Project Introduction

The Green Central SRTS project will build **pedestrian and bicycle improvements on E 34th Street and 10th or 11th Avenues** in 2024. This project will build a safe connection to Green Central Elementary School, other bikeways, parks, and important destinations in the area.

## Project Goals

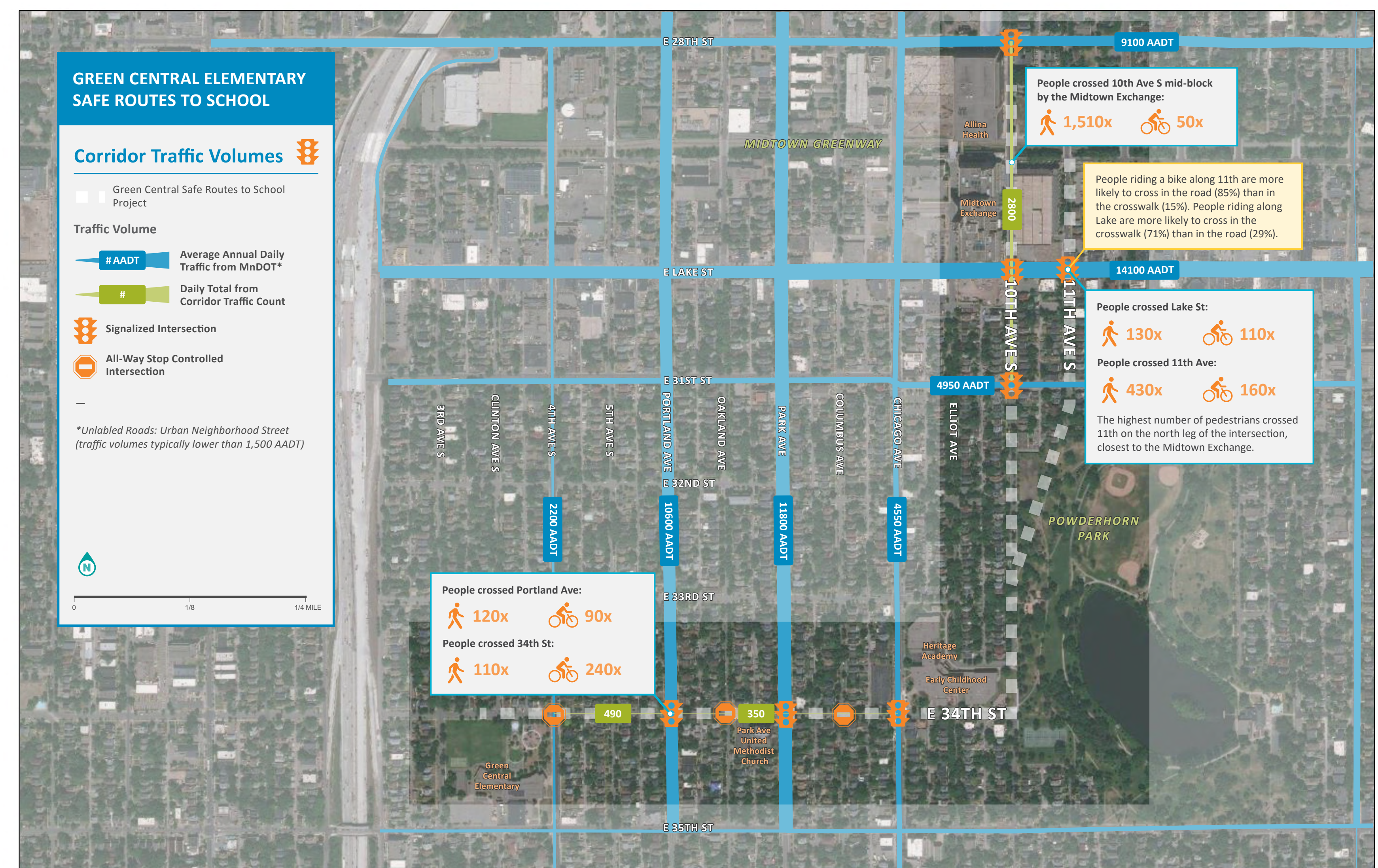
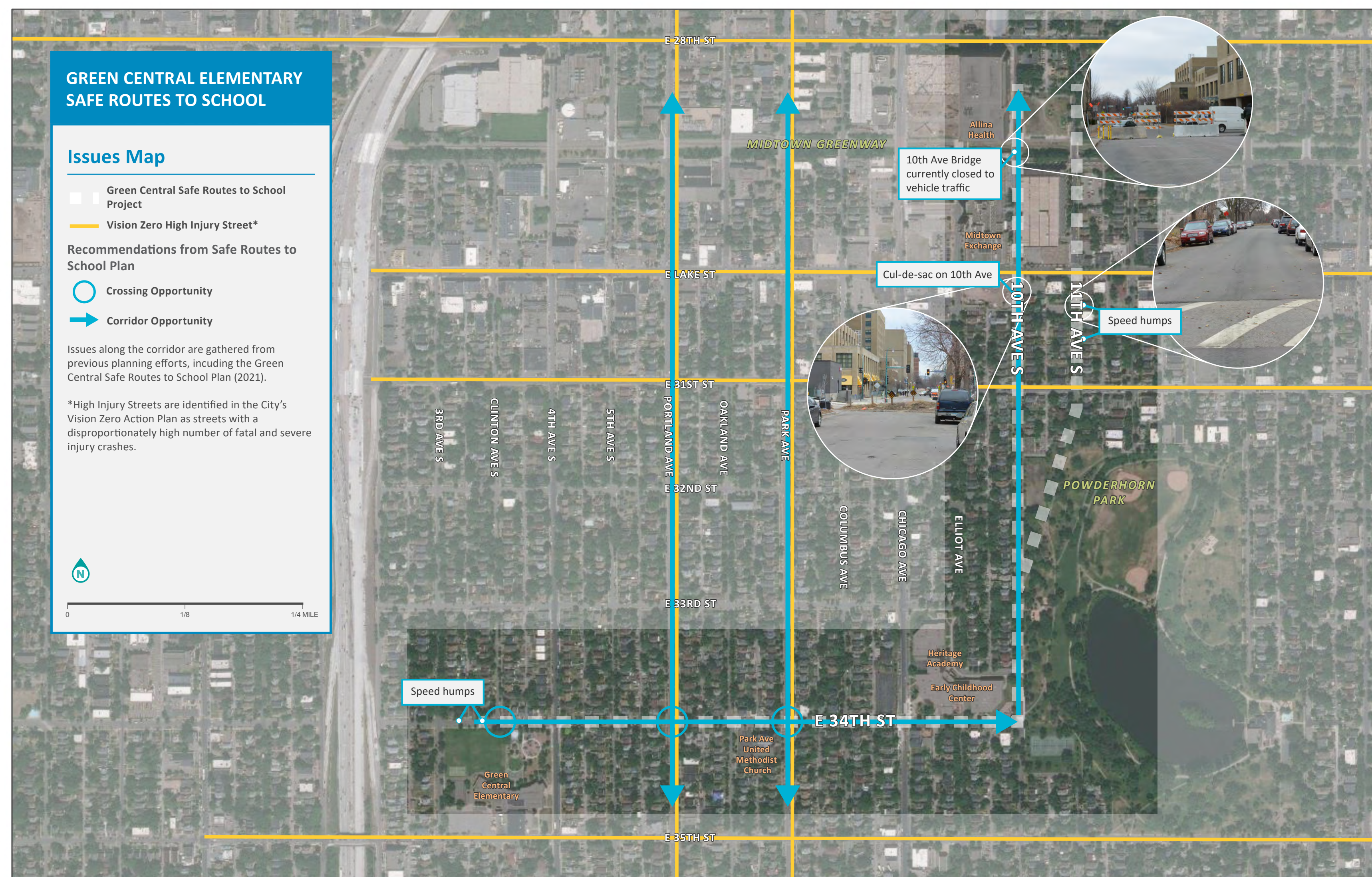
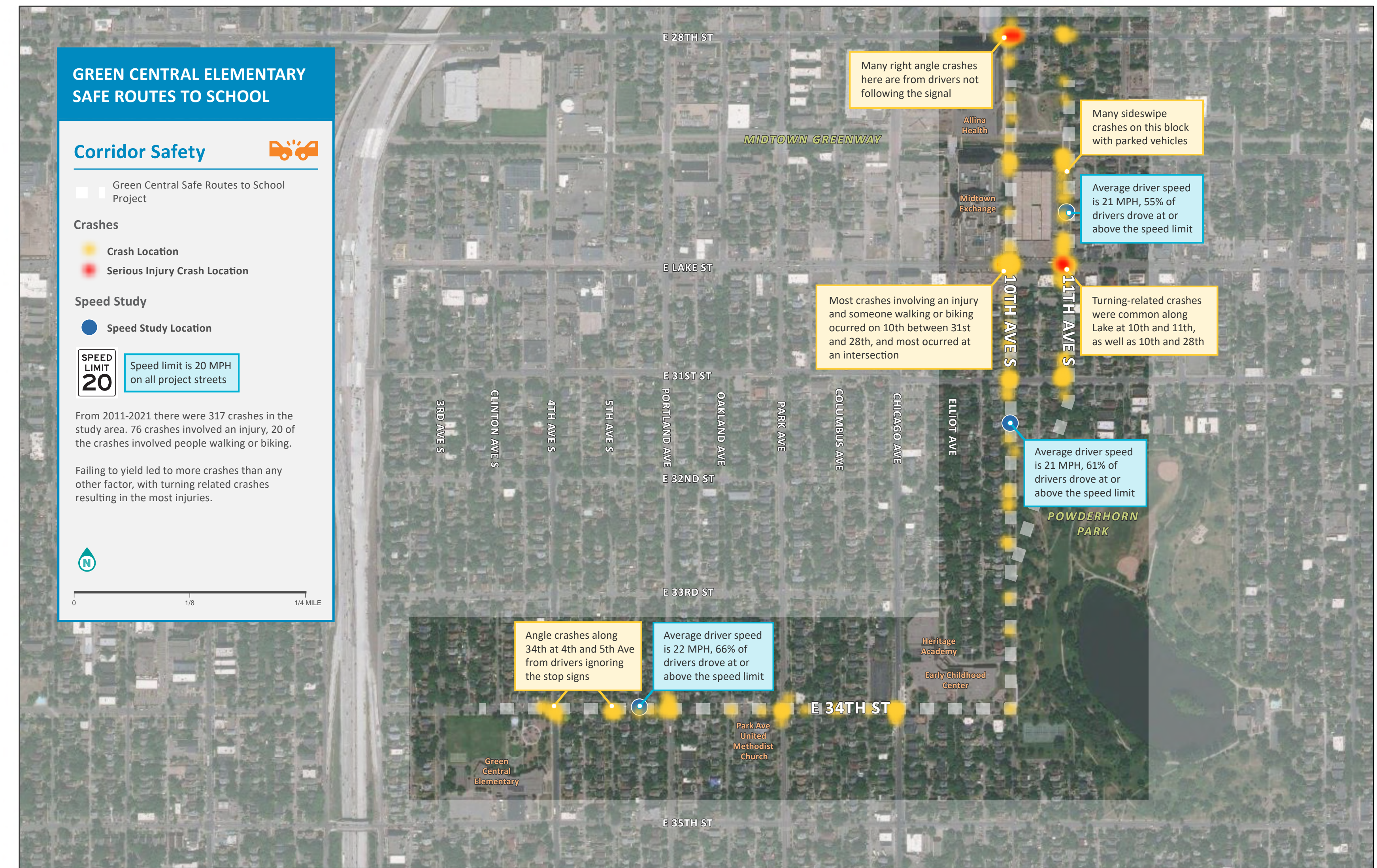
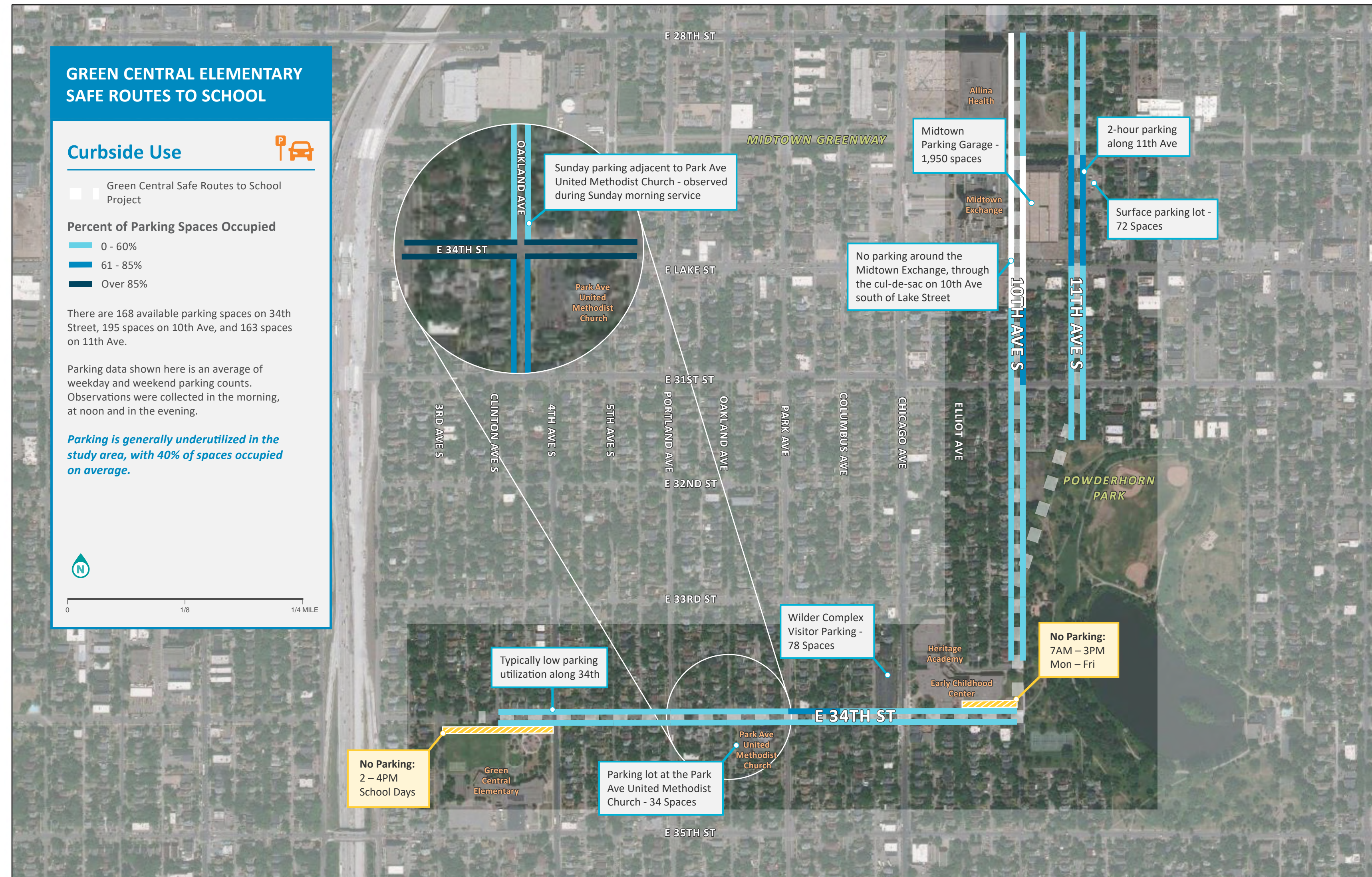
- **Improve traffic safety** for people walking and bicycling
- **Improve bicycle network connectivity** and access to nearby destinations including four schools and two parks
- **Address traffic safety** at documented high injury street intersections
- **Enhance comfort** and improve predictability for all users



## Project Timeline



# Existing Conditions



# Potential Treatments and Tradeoffs

## What would you like to see around Green Central?

With a limited budget and limited amount of space in the street, the City could use your help prioritizing which improvements to make.

Take a look at the maps nearby for more information on locations and opportunities identified for improvement. Then take a look at the information on this board and let us know what you would like to see on East 34th Street, and 10th or 11th Avenue South. Add a dot sticker to the box below the image to vote for a potential design, and add sticky notes if you have comments.

 Cost

 Space Required



### Pedestrian Space

Sidewalks may need to be enhanced to include curb ramps and additional ADA upgrades, which may require space from other uses.



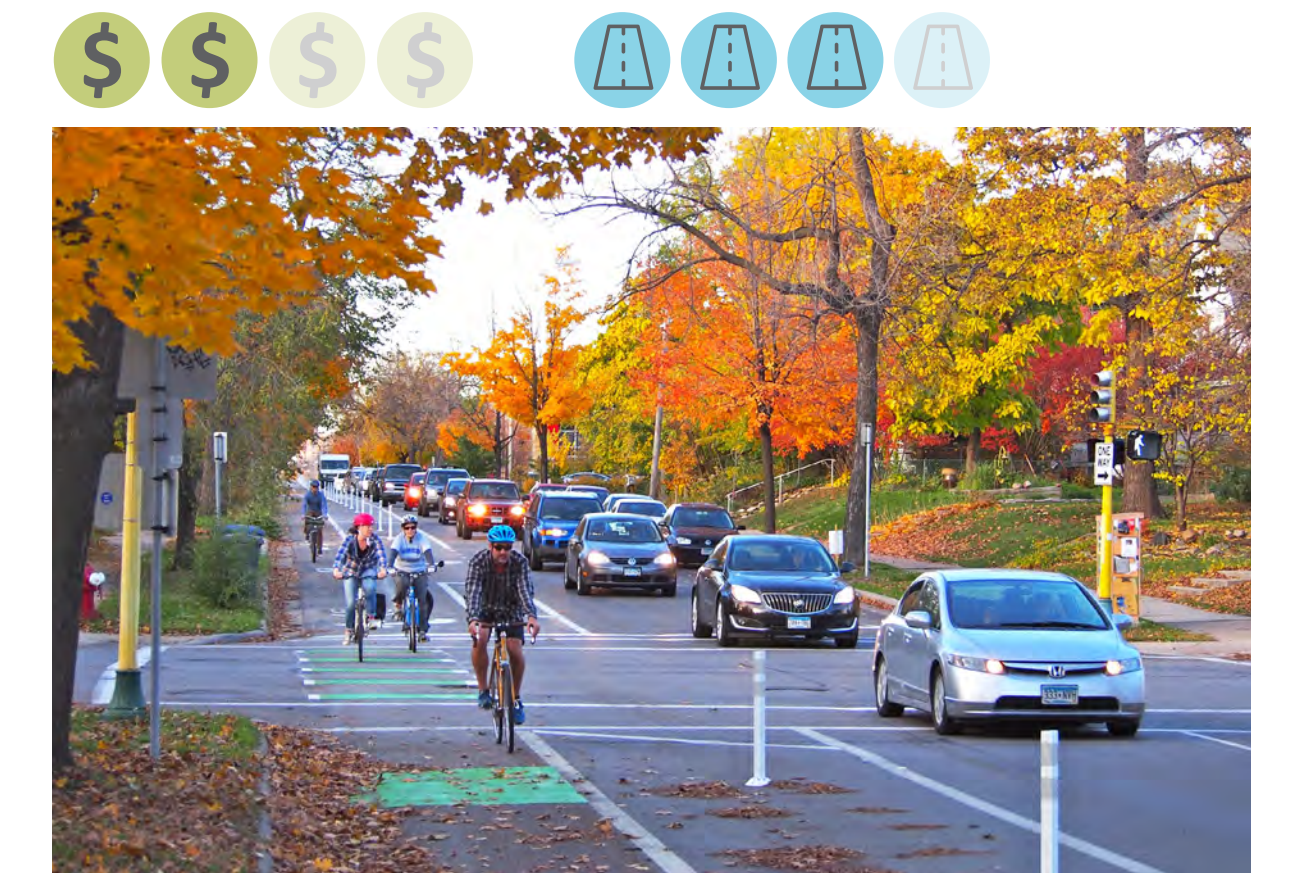
### Curb Extensions

A sidewalk extension that improves visibility and reduces the length of pedestrian crossings. Bumpouts may reduce on-street parking.



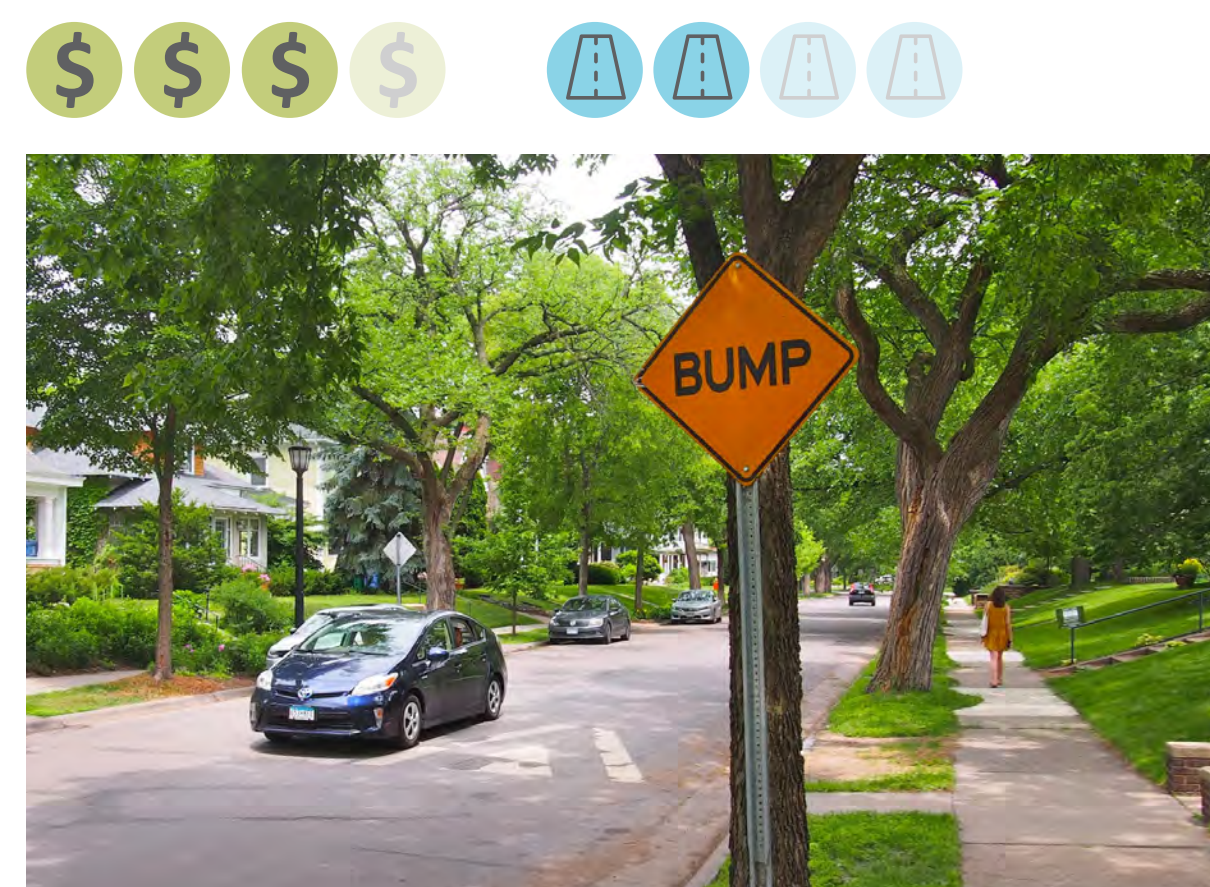
### Protected Bikeway (sidewalk)

A two-way trail next to the sidewalk that separates bicycles from vehicle traffic. May be more costly than other options.



### Protected Bikeway (street)

On-street travel lane exclusively for biking and micromobility, separated from motorized traffic. May require space from other uses.



### Traffic Calming

Slows down drivers with a variety of facilities and creates opportunities for green infrastructure but may reduce space for on-street parking.



### Right-Sizing Parking

Consolidating parking to strategic locations creates room for biking, walking, or green infrastructure, but reduces space for on-street parking.



### Green Infrastructure

Provides filtering for stormwater runoff and improves climate resiliency by increasing green space, but may reduce on-street parking.



### Anything Else We Should Think About?

Add your ideas below

# What Do You Think?

## Where would you like to see improvements?

Add a sticker to the map where you think we should add an improvement shown on the previous board.

Pedestrian Space

Curb Extensions

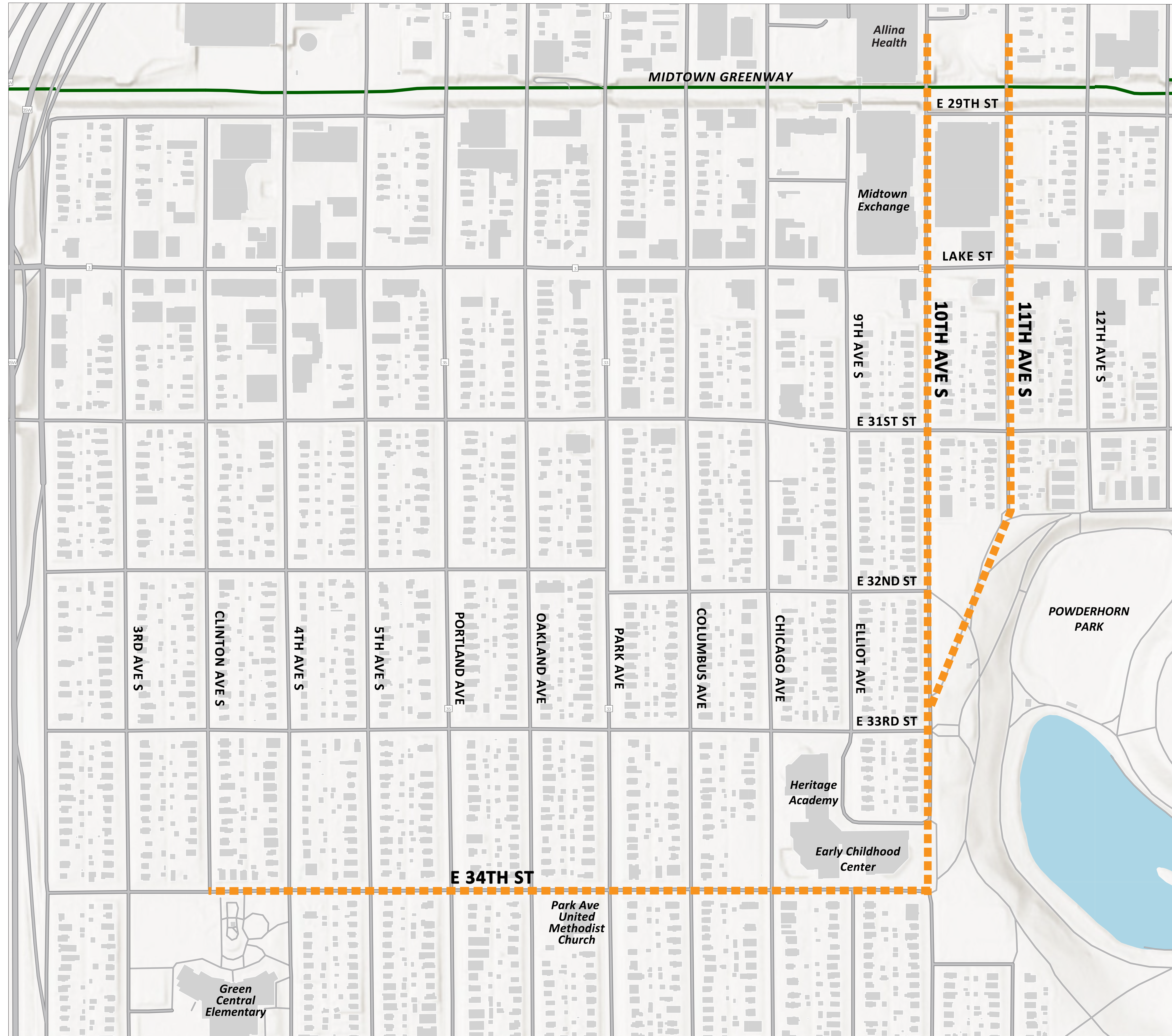
Protected Bikeway

Traffic Calming

Right-Size Parking

Green Infrastructure

We are proposing a bikeway connection on 34th St and either 10th or 11th Ave. Tell us which alignment you prefer. Add a check mark on your preferred alignment.



Add your checkmark

10th Ave

11th Ave