

Hennepin South
RECONSTRUCTION



HENNEPIN SOUTH RECONSTRUCTION

Construction Update
March 12, 2024
6pm - Virtual



Kimley»»Horn



Today's Agenda

- Schedule
- Construction
 - Utilities
 - Roadway
 - Detours
- What to Expect
- Next Steps & Communications

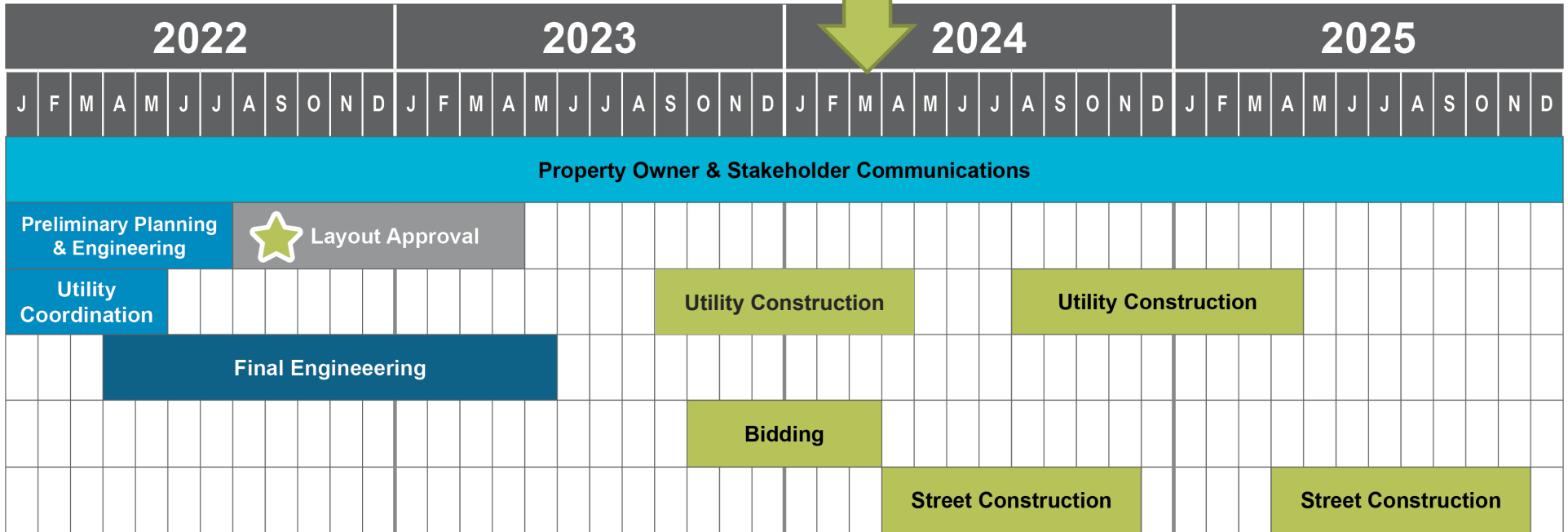


Hennepin Avenue Reconstruction from Lake St to Douglas Ave



Schedule

WE ARE HERE



Hennepin South
RECONSTRUCTION

Kimley»Horn



Roadway Work PHASE 1 – 2024 = Lake St to W 26th St.

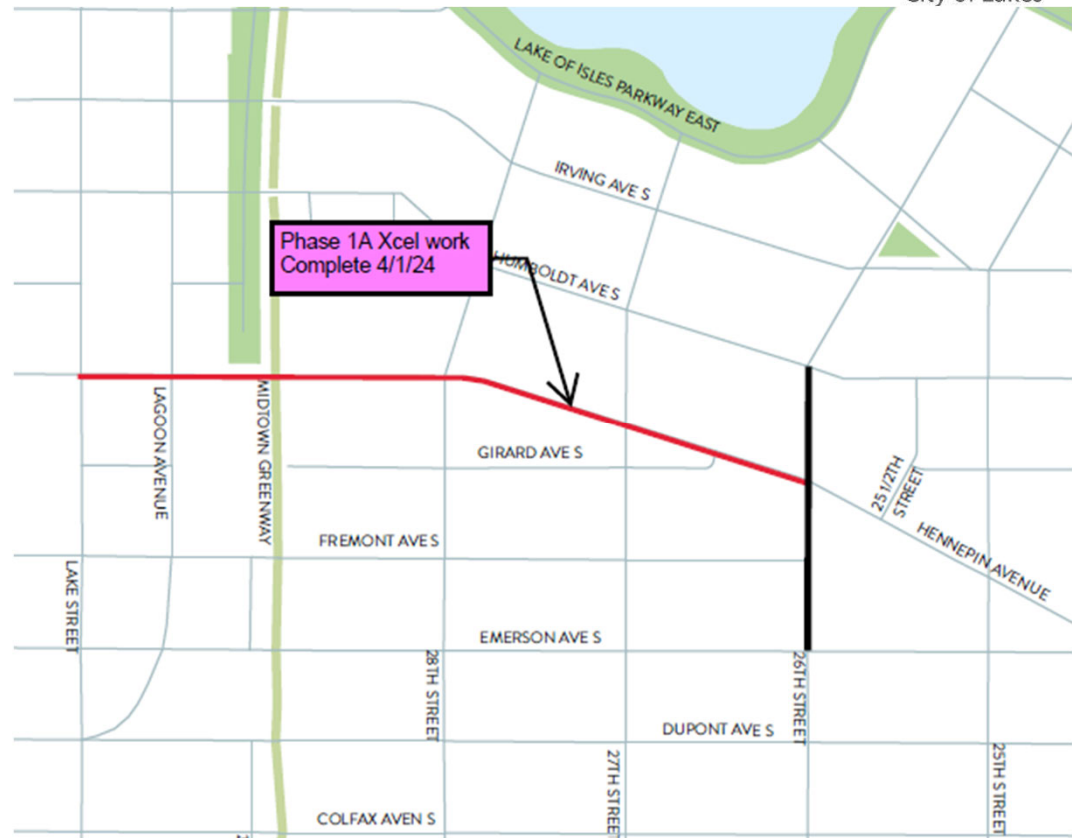


- CONSTRUCTION STARTS MONDAY APRIL 1st
- Hennepin Closed – Lake to 28th
- Hennepin Closed – 28th to 26th – Except Business Access Only

- Lane Closures and Parking Restrictions

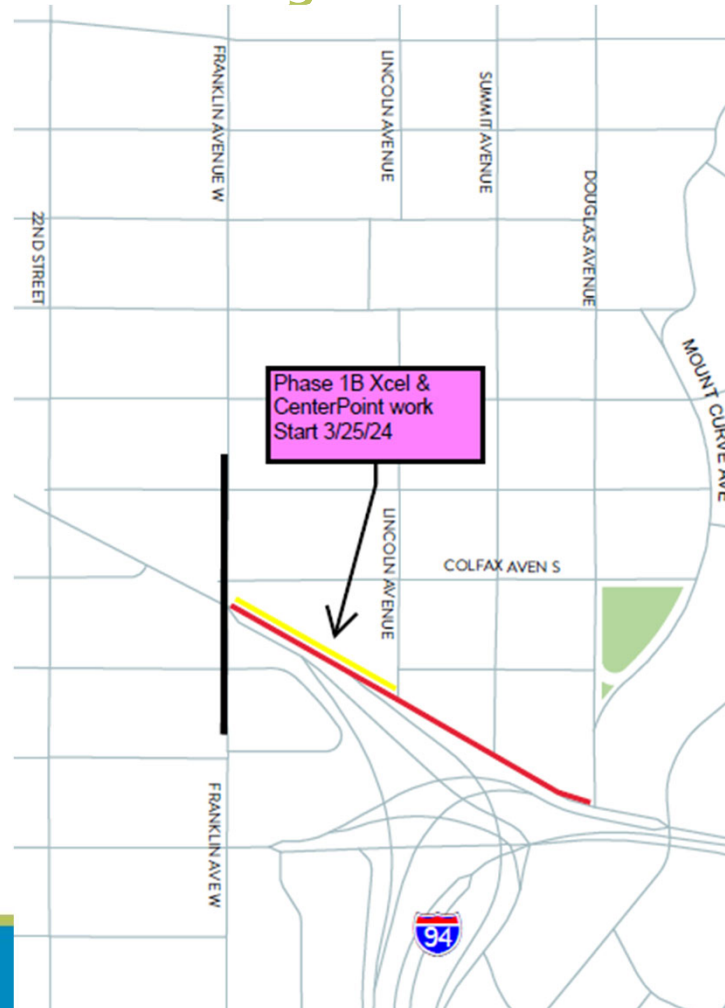
Utility work PHASE 1A – 2024 = Lake St to W 26th St.

- Hennepin - Xcel Energy Upgrades 2024
 - Complete 4/1
- Lane Closures and Parking Restrictions



Utility work PHASE 1B – 2024 = Franklin to Douglas

- **CenterPoint Energy Upgrades 2024**
 - Start 3/25 for 4 weeks
- **Xcel Energy Upgrades 2024**
 - Starts 3/25 thru August 2024
- **Lane Closures and Parking Restrictions**



Xcel Energy Work







PHASE 1 – 2024 = Lake St to W 26th St.

Hennepin Ave S Reconstruction Project

(W Lake St. to 28th St)

Construction & Traffic Impact Update

March 15 – April 5, 2024





Page 1

<p>Construction work:</p> <ul style="list-style-type: none"> — Xcel Energy Duct Bank — Sewer Replacement (starts 4/1) 	<ul style="list-style-type: none"> Partial Intersection Restriction Travel Lanes 	<ul style="list-style-type: none"> — Lane Closures Roadway Closure
--	--	---

WHAT'S HAPPENING

Lake St to 28th St

- Utility Construction will continue on Phase 1 of the Hennepin S. Reconstruction Project from Lake St to 26th St. This work will continue until April 2024. Utility work will start on Phase 1B from Franklin Ave to Douglas starting 3/25
- Current utility work consists of Xcel Energy installing new concrete duct banks along the east side of the corridor.
- The City roadway construction will begin April 1st. This will include pavement removals and deep sanitary sewer replacement work.

WHAT TO EXPECT

Lake St to 28th St

- Roadway & Utility work using heavy equipment will increase noise, vibration, and dust in work areas and sidewalks.
- Vehicle traffic will reduce travel lanes down to 1-lane in both directions during non-rush hours. Depending on the block's construction activity.
- Cross streets will at times be reduced to 1-lane.
- Parking lanes will be closed at certain locations.
- Business access will remain open during the construction.
- Pedestrian detours will be set up as needed. Greater impacts can be expected at intersections where work is occurring.
- Metro Transit buses will be detoured over to Lyndale Ave. via Lake St or 31st St. and 24th St. starting 4/1.

STAY CONNECTED

Visit the project website
Sign up for project updates on the project website.

[Minneapolismn.gov/government/projects/hennepin-ave-s/](https://minneapolismn.gov/government/projects/hennepin-ave-s/)



CONTACT US

Adam Hayow, Project Engineer - Public Works

📞 612-673-2172 ✉️ adam.hayow@minneapolismn.gov

PHASE 1 – 2024 = Lake St to W 26th St.

Hennepin Ave S Reconstruction Project

(W 28th St to 26th St.)

Construction & Traffic Impact Update
March 15 – April 5, 2024



Page 2

Construction work: Xcel Energy Duct Bank Partial Intersection Restriction Roadway Closure

Traffic impact: Lane Closures Travel Lanes

WHAT'S HAPPENING

28th St to 26th St

- Utility Construction will continue on Phase 1 of the Hennepin S. Reconstruction Project from Lake St to 26th St. This work will continue until April 2024. Utility work will start on Phase 1B from Franklin Ave to Douglas starting 3/25
- Current utility work consists of Xcel Energy installing new concrete duct banks along the east side of the corridor.
- The City roadway construction will begin April 1st. This will include pavement removals and deep sanitary sewer replacement work.

WHAT TO EXPECT

28th St to 26th St

- Roadway & Utility work using heavy equipment will increase noise, vibration, and dust in work areas and sidewalks.
- Vehicle traffic will reduce travel lanes down to 1-lane in both directions during non-rush hours. Depending on the block's construction activity.
- Cross streets will at times be reduced to 1-lane.
- Parking lanes will be closed at certain locations.
- Business access will remain open during the construction.
- Pedestrian detours will be set up as needed. Greater impacts can be expected at intersections where work is occurring.
- Metro Transit buses will be detoured over to Lyndale Ave. via Lake St or 31st St. and 24th St. starting 4/1.

STAY CONNECTED

Visit the project website
Sign up for project updates on the project website.

[Minneapolismn.gov/government/projects/hennepin-ave-s/](https://minneapolismn.gov/government/projects/hennepin-ave-s/)



CONTACT US

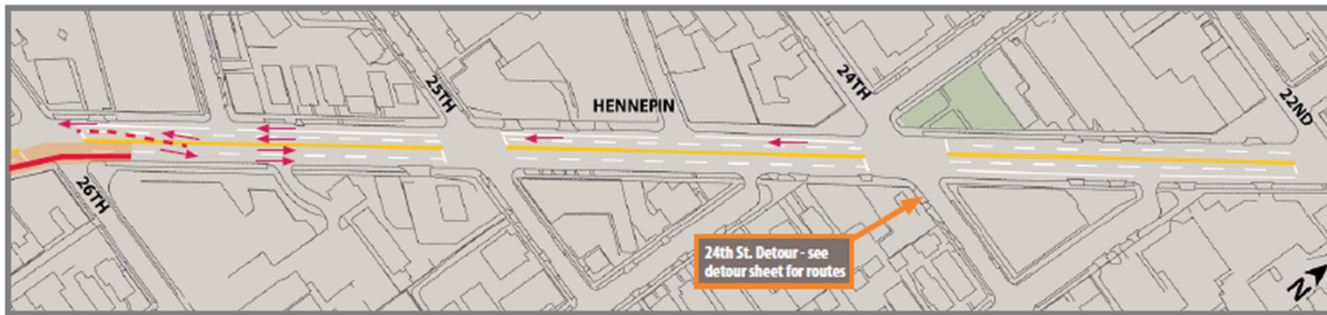
Adam Hayow, Project Engineer - Public Works
612-673-2172 | adam.hayow@minneapolismn.gov

PHASE 1 – 2024 = Lake St to W 26th St.

Hennepin Ave S Reconstruction Project

(W 26th St. to 22nd St.)

Construction & Traffic Impact Update
March 15 – April 5, 2024



Page 3

Construction work: Xcel Energy Duct Bank

Partial Intersection Restriction

Traffic impact: Lane Closures

Travel Lanes

WHAT'S HAPPENING

26th St to 22nd St

- Utility Construction will continue on Phase 1 of the Hennepin S. Reconstruction Project from Lake St to 26th St. This work will continue until April 2024. Utility work will start on Phase 1B from Franklin Ave to Douglas starting 3/25
- Current utility work consists of Xcel Energy installing new concrete duct banks along the east side of the corridor.
- The City roadway construction will begin April 1st. This will include pavement removals and deep sanitary sewer replacement work.

WHAT TO EXPECT

26th St to 22nd St

- Roadway & Utility work using heavy equipment will increase noise, vibration, and dust in work areas and sidewalks.
- Vehicle traffic will reduce travel lanes down to 1-lane in both directions during non-rush hours. Depending on the block's construction activity.
- Cross streets will at times be reduced to 1-lane.
- Parking lanes will be closed at certain locations.
- Business access will remain open during the construction.
- Pedestrian detours will be set up as needed. Greater impacts can be expected at intersections where work is occurring.
- Metro Transit buses will be detoured over to Lyndale Ave. via Lake St or 31st. St. and 24th St. starting 4/1.

STAY CONNECTED

Visit the project website
Sign up for project updates on the project website.

[Minneapolismn.gov/government/projects/hennepin-ave-s/](https://minneapolismn.gov/government/projects/hennepin-ave-s/)



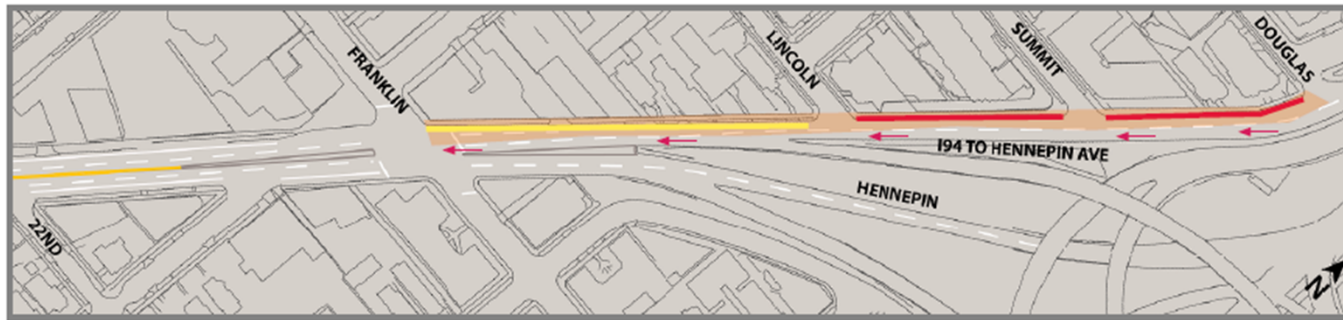
CONTACT US

Adam Hayow, Project Engineer - Public Works
612-673-2172 | adam.hayow@minneapolismn.gov

Utility Work PHASE 1B – 2024 = Franklin to Douglas

Hennepin Ave S Reconstruction Project (22nd St. to Douglas Ave.)

Construction & Traffic Impact Update
March 15 – April 5, 2024




Page 4

Construction work:  Xcel Energy Duct Bank



Partial Intersection Restriction

 CenterPoint Gas

Traffic impact:  Lane Closures

 Travel Lanes



WHAT'S HAPPENING

22nd St to Douglas Ave

- Utility work on Phase 1B will begin March 25th north of Franklin. Both CenterPoint Energy and Xcel Energy will be installing new gas mains, concrete duct banks, and manholes.
- Current utility work consists of Xcel Energy installing new concrete duct banks along the east side of the corridor.
- The City roadway construction will begin April 1st. This will include pavement removals and deep sanitary sewer replacement work.



WHAT TO EXPECT

22nd St to Douglas Ave

- Roadway & Utility work using heavy equipment will increase noise, vibration, and dust in work areas and sidewalks.
- Vehicle traffic will reduce travel lanes down to 1-lane in both directions during non-rush hours. Depending on the block's construction activity.
- Cross streets will at times be reduced to 1-lane.
- Parking lanes will be closed at certain locations.
- Business access will remain open during the construction.
- Pedestrian detours will be set up as needed. Greater impacts can be expected at intersections where work is occurring.
- Metro Transit buses will be detoured over to Lyndale Ave. via Lake St or 31st St. and 24th St. starting 4/1.



STAY CONNECTED

Visit the project website
Sign up for project updates on the project website.

[Minneapolismn.gov/government/projects/hennepin-ave-s/](https://minneapolismn.gov/government/projects/hennepin-ave-s/)

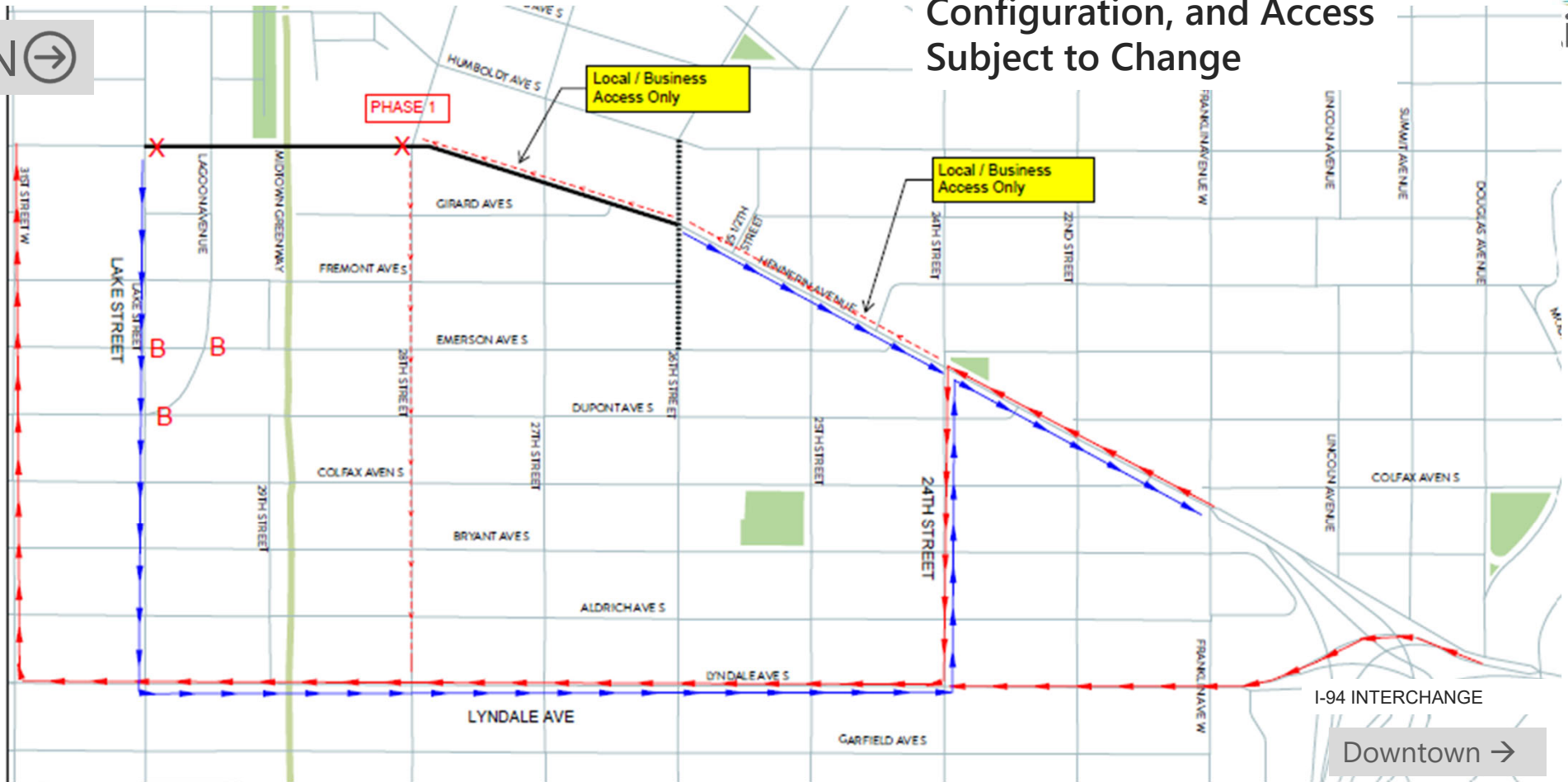


CONTACT US

Adam Hayow, Project Engineer - Public Works
612-673-2172 | adam.hayow@minneapolismn.gov

Detours: Phase 1 - 2024

** Work Zones, Lanes Configuration, and Access Subject to Change



What to Expect in 2024

- Disruption
- Noise
- Dust
- Pedestrian Detours
- Traffic Impacts
 - Lane Closures
 - Parking Closures
 - Lane shifts
 - Single Lane operations

**** Work Zones, Lanes Configuration, and Access Subject to Change**



What to Expect

- Lead Water Service Line Replacement Program
- Sidewalks open (when possible)
- Business Access
 - At all times

**** Work Zones, Lanes Configuration, and Access Subject to Change**



2024 Roadway Construction

- Disruption, Noise, Dust, Pedestrian Detours, Traffic Impacts



2024 Roadway Construction



2024 Roadway Construction



Stakeholder Communications

- **Weekly Email Updates Start April 2024**
- **Weekly Friday Morning Stakeholder Mtgs**
 - Start Friday 4/5 10am - Virtual
- **One-on-one Site Mtgs**
- **Website**
 - www.minneapolismn.gov/government/projects/hennepin-ave-s/

Stay Connected

- **Questions & Answers**
- **Project Website**
 - www.minneapolismn.gov/government/projects/hennepin-ave-s/
- **Road Closures**
 - [Road Closures Map - City of Minneapolis \(minneapolismn.gov\)](#)