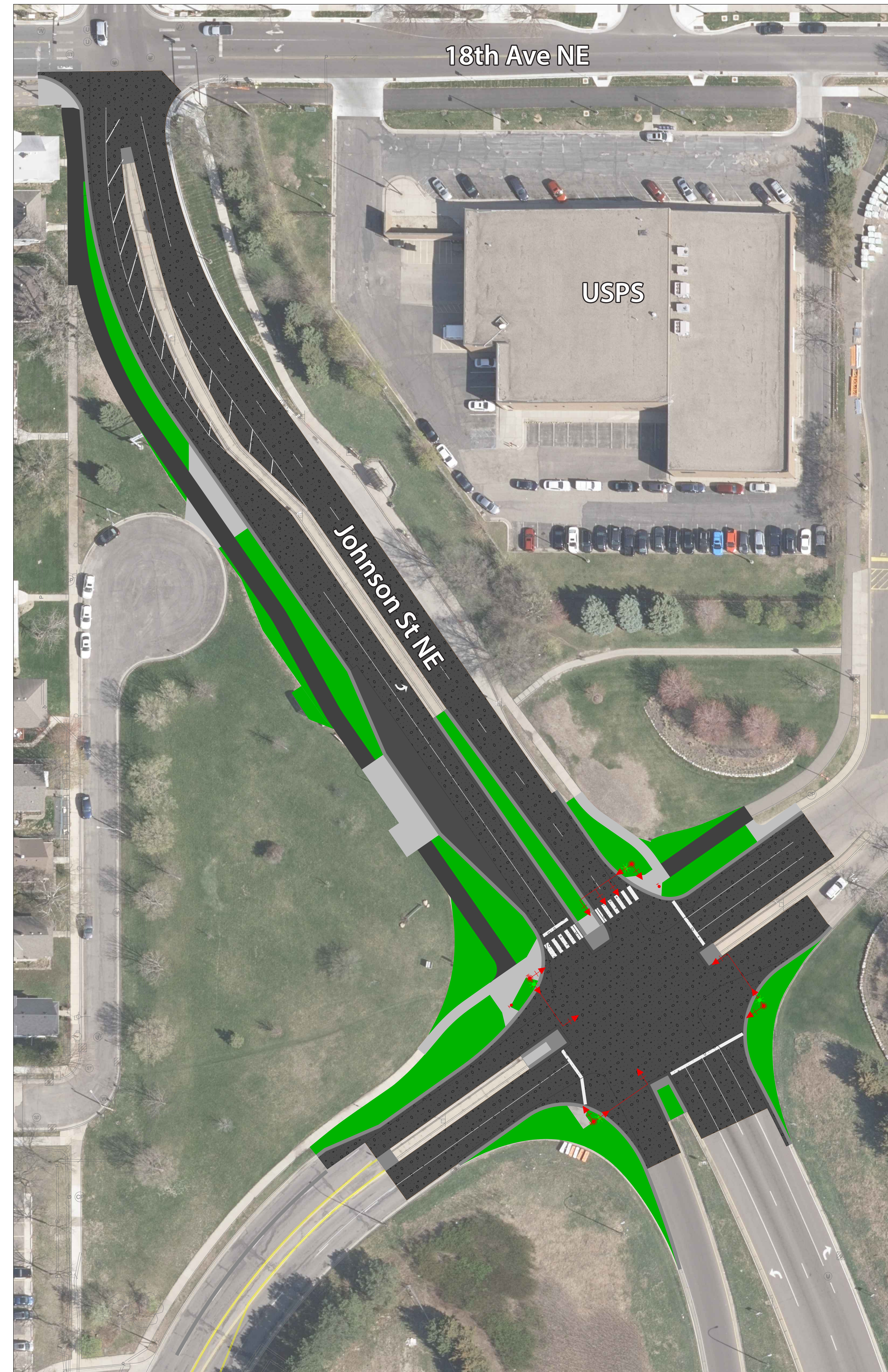


### Existing



### Proposed - Preferred Design



### Side-by-Side Comparison

The exhibit on the left shows the intersection and broader project area up to 18th Ave NE as it exists today.

The exhibit on the right shows the proposed design, very similar to how the intersection and broader project area will be constructed.

### Preferred Design Concept Selected: New Signalized Intersection

A new signalized intersection with improved geometry was selected as the preferred design concept. This is the preferred concept because it:

- Performs better under heavy traffic volumes
- Does not compromise project goals
- Allows more flexibility

### Project Area Upgrades

This design will make the following upgrades to the intersection and broader project area:

- Remove channelized right turns (or “slip lanes”)
- Reduce the Johnson St pedestrian crossing distance by approximately 80 feet
- Add a 10-foot median refuge
- Add a 10-foot shared-use path along the west side of Johnson St to connect to 18th Ave
- Upgrade pedestrian ramps and APS/signal components
- Move south-bound bus stop 100 feet closer to the intersection
- Create approximately 10,000 square feet of new green space

### New Signalized Intersection Design Concept



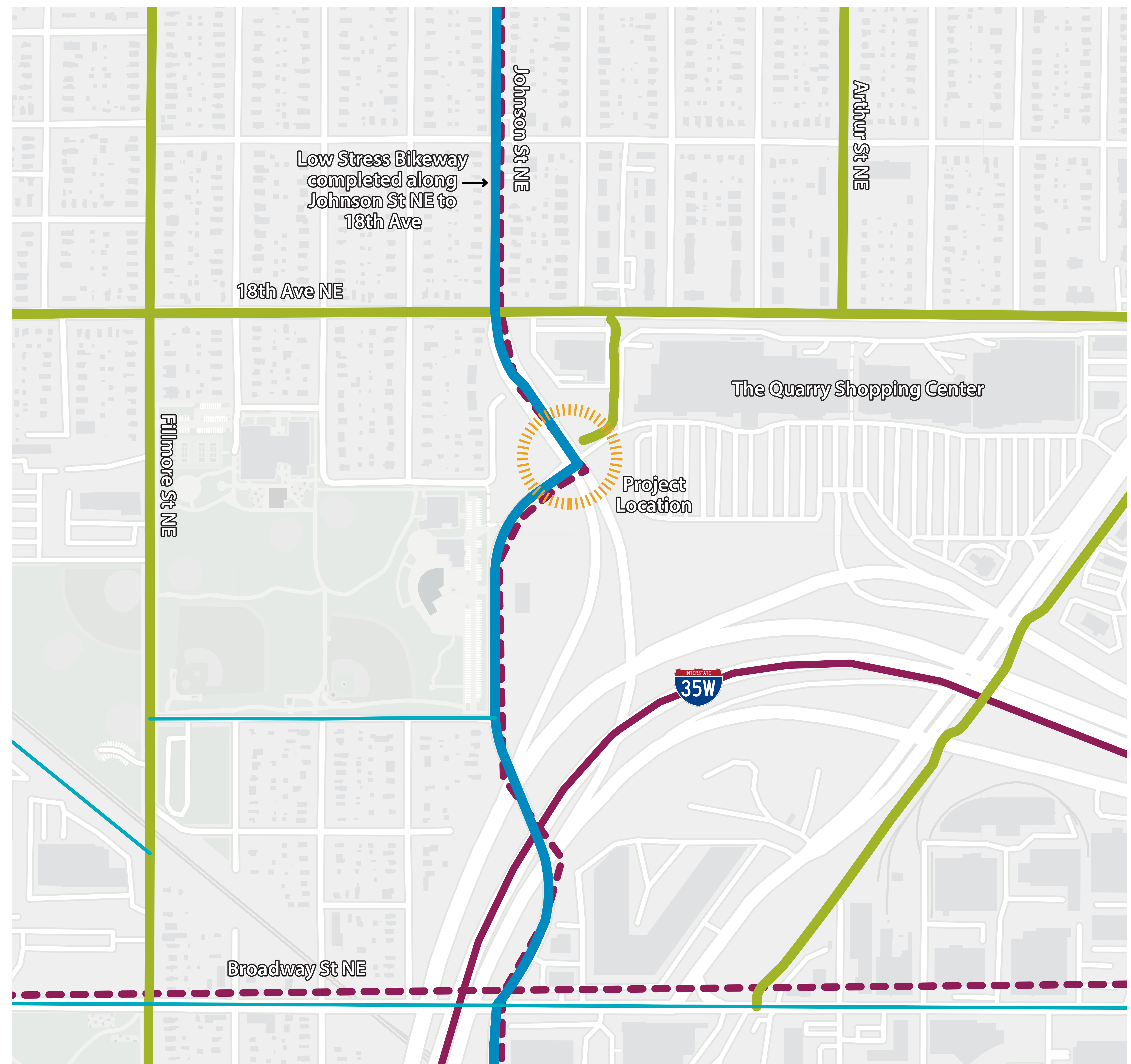
### Modal Priority Corridors

- Overlapping Transportation Action Plan (TAP) Priority Networks at the project location, including:
  - Existing Low Stress Bikeway (northeast of intersection traveling between USPS and Home Depot)
  - Near-term Low Stress Bikeway along Johnson
  - Future Improved Transit along Johnson
  - Future Transit Priority Corridor along I-35W
- 3 Metro Transit local bus routes currently serve this area including Routes 4, 10, and 30
- Future BRT alignment - Johnson / Lyndale

### Coordinated Efforts

Johnson Street NE south of the project is identified as a Near-term Low Stress Bikeway. There are ongoing efforts as part of this project to coordinate this implementation.

### TAP Network Map



- All Ages and Abilities Network
  - Low Stress Bikeway
  - Near-term Low Stress Bikeway
  - Connector or Long-term Low Stress Bikeway
- Transit
  - Future Transit Priority Corridor
  - Future Improved Transit