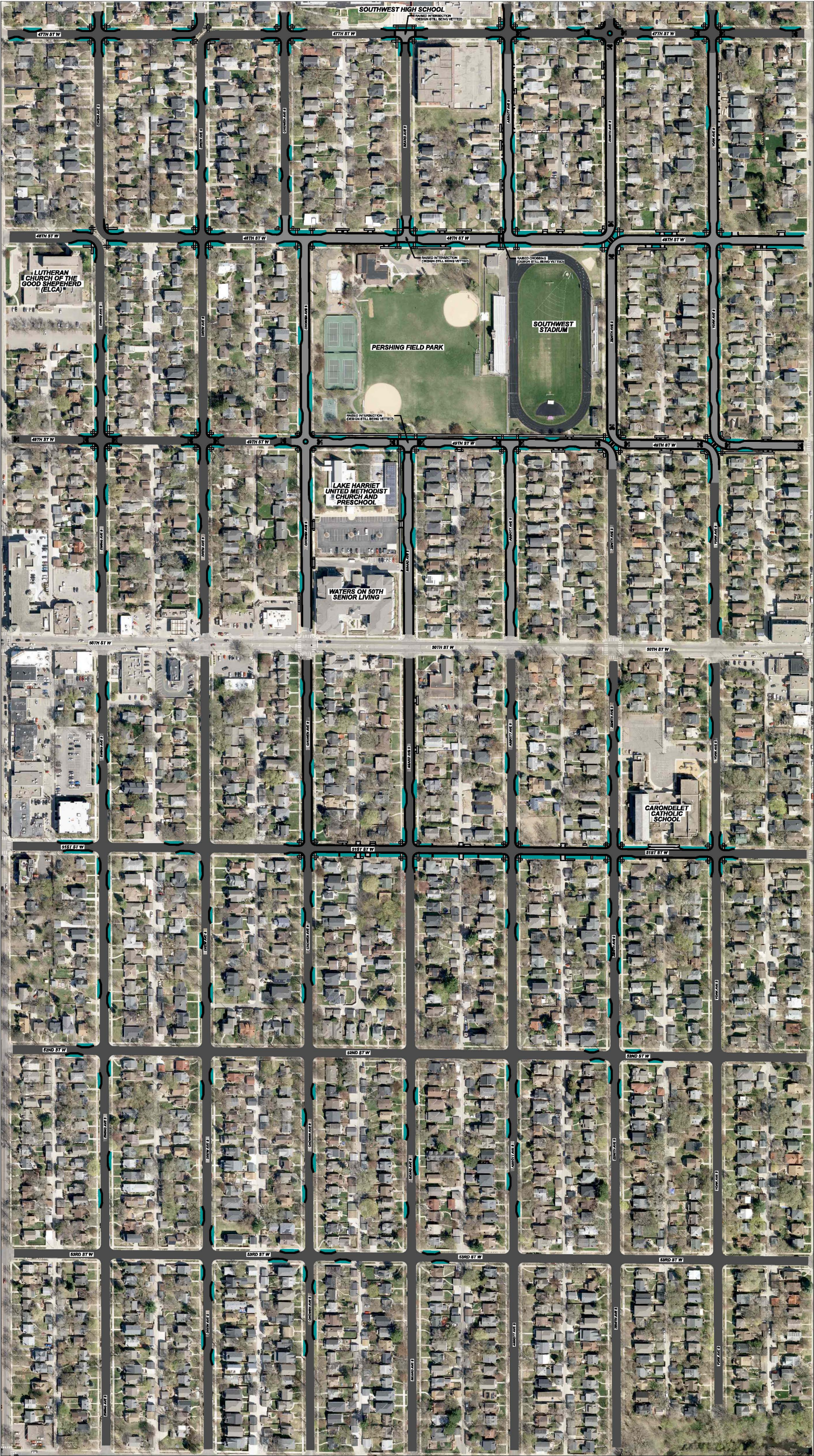


DRAFT SUBJECT TO CHANGE



LEGEND

- PROPOSED BITUMINOUS STREET
- PROPOSED CONCRETE STREET
- PROPOSED SIDEWALK/DRIVEWAY
- PROPOSED CURB & GUTTER
- PRELIMINARY LOCATIONS FOR GREEN STORMWATER INFRASTRUCTURE (GSI). THE TOTAL NUMBER OF BASINS AND EXACT LOCATIONS ARE STILL BEING DETERMINED

Minneapolis
Public Works

Stantec
Minneapolis
Office
Suite 1000
733 Marquette Ave S
Minneapolis, MN 55402
Phone: 612-712-2000

**WEST FULTON
NEIGHBORHOOD
IMPROVEMENTS**

DRAFT 15% CONCEPT DESIGN
04/14/2025